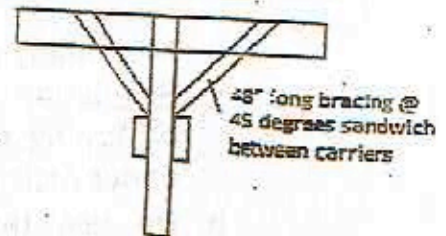
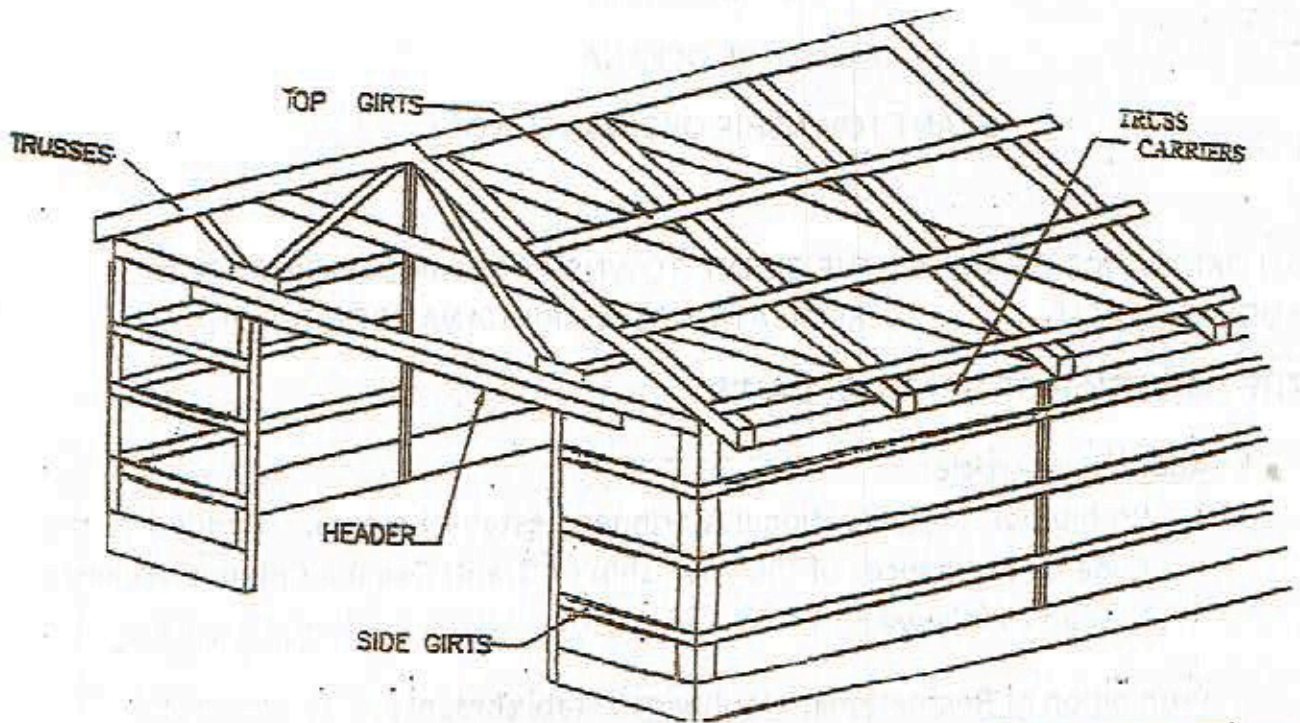


RESIDENTIAL POLE BUILDING PLANS & SPECIFICATIONS



Y BRACING

Wind pressure on the walls will cause the pole to bend at the ground line. any BRACING should be provided at the eave line for buildings over 10' tall and / or for buildings over 60' long

1 BUILDING SIZE: _____ X _____ X _____

2 TRUSS LOADING: _____ TCLL; _____ TCDL
 _____ BCLL; _____ BCDL

Minimum 60# Ground Snow Load

Truss Bracing: See Manufacturer's Spec's

Truss Prints are Required Before Obtaining Permit

3 POSTS: _____ X _____; _____ O.C.

See Post Sizing Chart on Reverse Side

4 POLE FOOTINGS: _____

See Pole Footing Chart on Reverse Side

5. TRUSS CARRIERS: _____ - _____ X _____

See Truss Carrier Chart on Reverse Side

Material type

6 MAIN DOOR HEADER: _____ X _____

7. TOP & SIDE GIRTS: _____ X _____; _____ O.C.